



PETRO-TAPE™ & PETRO-TAPE™ NICKEL

Rugged, inert and highly resistant tape made of pure, virgin polytetrafluoroethylene. It is impervious to steam, salt water, air, fuels, refrigerants, acids and alkalis (including sulfuric, hydrochloric, nitric, sodium hydroxide and chromic), solvents (including kerosene, aircraft oils, gasoline, carbon tetrachloride and cleaning fluids) and gases (including natural, liquid and gaseous oxygen, ammonia, freon, chlorine, propane, butane, acetylene and nitrogen).

APPLICATIONS

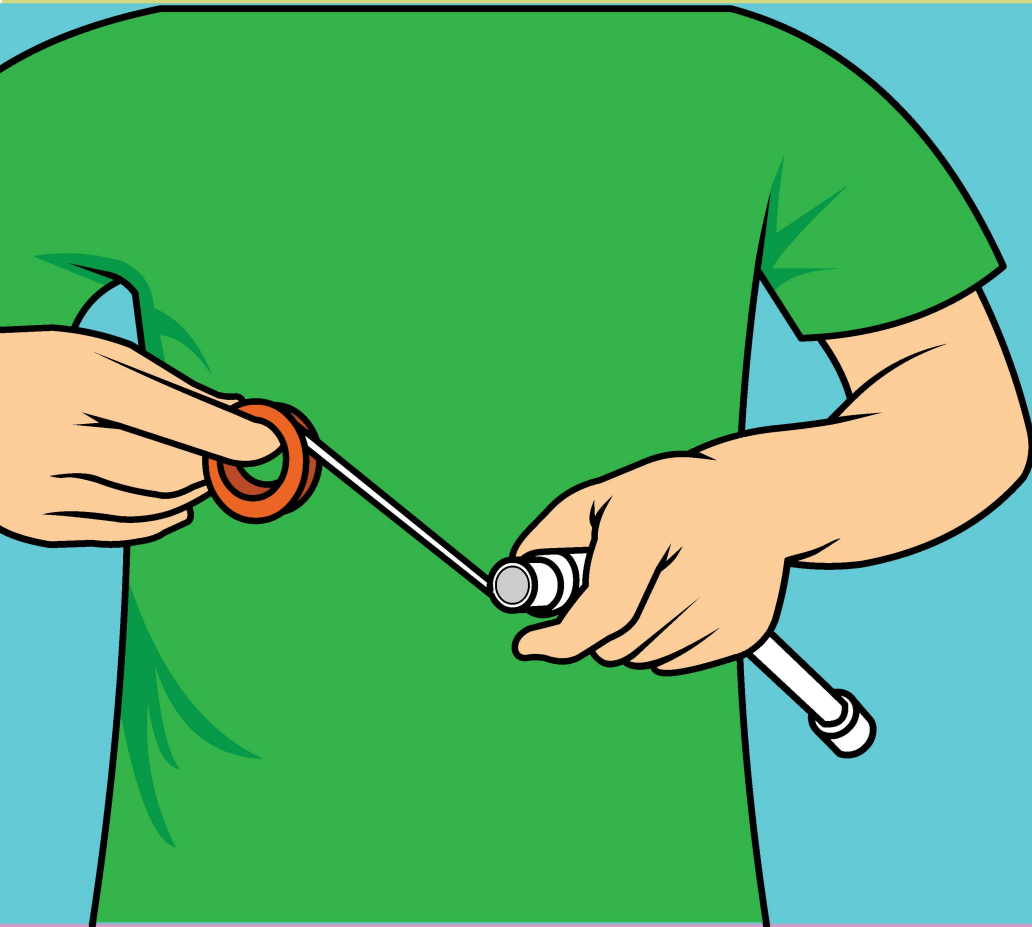


- Threaded pipe connections
- Valve stems
- Hydraulic pressure lines
- *Adaptable to all threaded materials including:*
 - Galvanized and black iron
 - Stainless steel
 - Synthetic rubber
 - Aluminum
 - Plastics
 - Copper
 - Brass
 - And more

BENEFITS

More Economical Than Traditional Tape

- Strong
- Durable
- Easy to use
- Non-Fraying
- Multipurpose
- Will not drip, run or dry out
- Ready for instant use
- Long shelf life

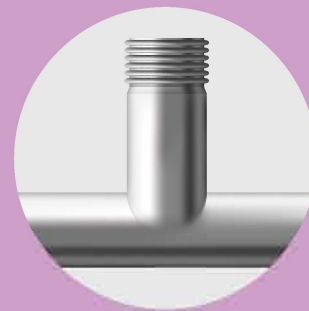


PTFE tape alone:

1. Ensure threads are clean before application of tape and thread compound.
2. Secure the tape to the pipe threads wrapping clockwise (i.e., in the direction of the pipe thread)
3. Complete the assembly by wrenching the back to the FTHT position plus the required additional threads.

PTFE tape in combination with compound:

1. Ensure threads are clean before application of tape and thread compound.
2. Secure the tape first to the pipe threads wrapping clockwise (i.e., in the direction of the pipe thread)
3. Apply thread compound from root to crest of the first two threads, and only to the MNPT connection.
4. Complete the assembly by wrenching back to the FTHT position plus the required additional threads.
5. If compound is used without PTFE tape, simply eliminate step 2, apply compound to the MNPT connection threads filling root to crest with no voids
6. Complete the assembly by wrenching back to the FTHT position plus the required additional threads.



Recommendation:

Only wrap tape 2-3 times on smaller diameter connections (Larger diameter connections, (> NPT 2), often require additional wraps from 4-8 depending on size.)

To learn more visit:
jetlube.com/petrotape

JET-LUBE®